

# MILL CREEK RESTORATION AT EVENDALE COMMONS

## FAST FACTS

Location: Evendale, Ohio

Project Implementers:  
Village of Evendale,  
Anchor Properties, Mill  
Creek Watershed Council  
of Communities

Project Cost: \$300,346  
Grant Funds: \$225,259  
Local Match: \$75,087

Timeframe: Summer  
2015-Winter 2016

## PROJECT FEATURES

850' bank stabilization

Retrofitted detention  
basins to significantly slow  
stormwater flow to stream

Narrow the low-flow  
channel helps transfer  
stream flows through this  
reach

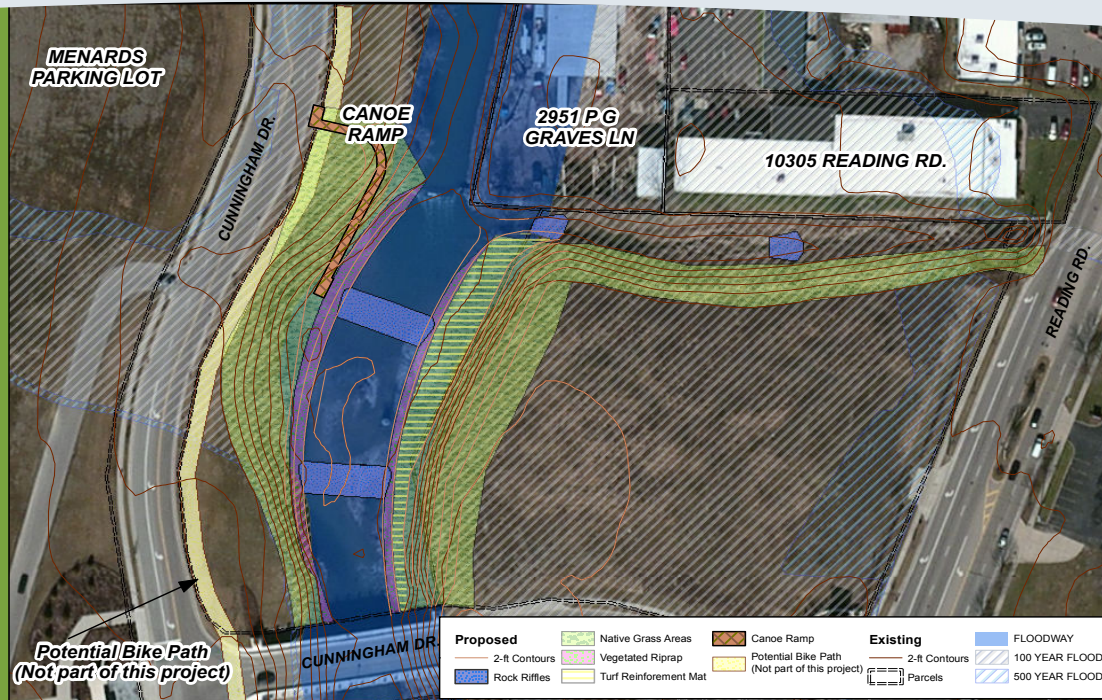
New stabilized banks and  
benches provide flood  
capacity; stops deposition

Canoe access (the first on  
the Mill Creek!); pro-  
vision for extension of  
Evendale hike/bike trail

## CONTACT US

1223 Jefferson Avenue  
Cincinnati, OH 45215  
Phone: (513) 563-8800

[info@millcreekwatershed.org](mailto:info@millcreekwatershed.org)  
[millcreekwatershed.org](http://millcreekwatershed.org)



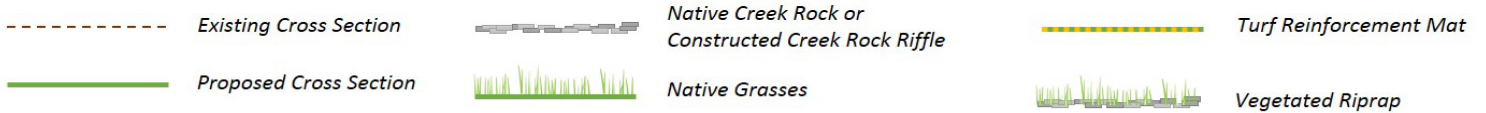
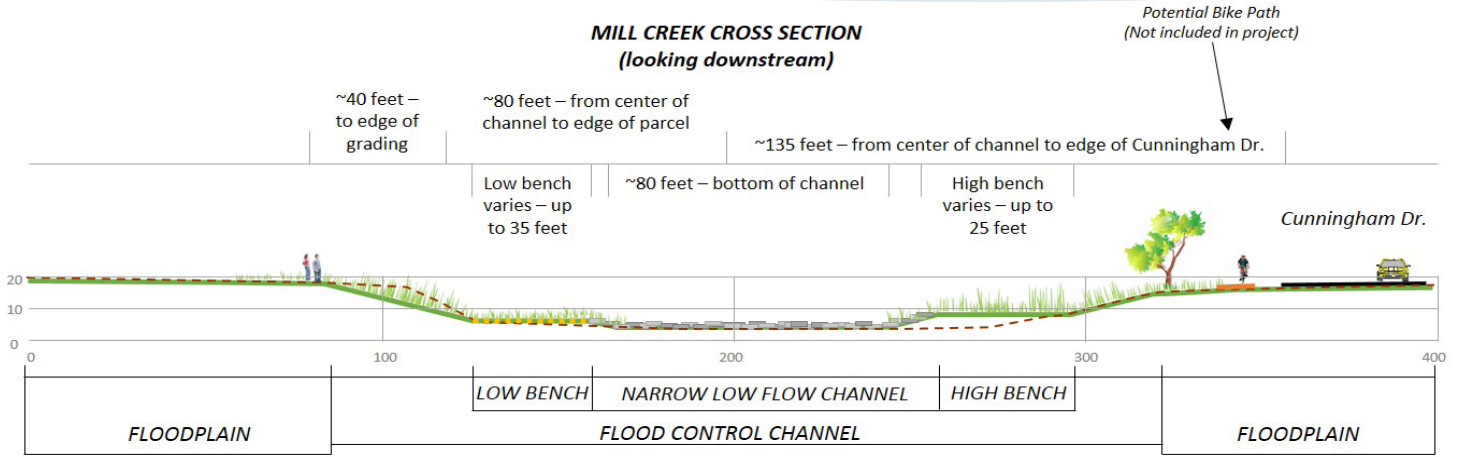
Concept plan; prepared by Sustainable Streams

## Project Budget

Category	Item	Clean Ohio			
		Unit Price	Units	QTY	Sub-total
<b>Professional Services</b>					
	Survey	\$ 4,250	Lump Sum	1	\$ 4,250
	Permitting	\$ 8,850	Lump Sum	1	\$ 8,850
	Design and Engineering	\$ 23,500	Lump Sum	1	\$ 23,500
					\$ 36,600
<b>Site Improvements</b>					
	Cut/fill Remaining Onsite (re-grading)	\$ 7	CY	2800	\$ 19,600
	Riffles (creek rock)	\$ 295	CY	223	\$ 65,785
	Rock Armoring	\$ 120	CY	305	\$ 36,600
	Low-Growing Natives Seed Mix	\$ 1.95	SY	8667	\$ 16,901
	Trees	\$ 550	EA	16	\$ 8,800
	Dewatering	\$ 29,500	LS	1	\$ 29,500
	Convert Mowed Grass to Native Tall Grass	\$ 2	SY	2810	\$ 5,620
	Turf Reinforcement Mat	\$ 6	SY	1153	\$ 6,918
	Invasive vegetation removal, hauling and disposal	\$ 14,000	Lump Sum	1	\$ 14,000
	Mobilization	\$ 22,000	Lump Sum	1	\$ 22,000
	Establishment	\$ 2,500	Acre	3.50	\$ 8,750
	Signage design, fabrication, installation and mounts	\$ 1,000	Sign	2	\$ 2,000
					\$ 236,474
<b>Contingency</b>					
	Contingency	\$ 27,272	10%	1	\$ 27,272
					\$ 300,346
<b>Total Project Cost</b>					
					\$ 300,346

Total Grant \$225,259  
Village In-Kind Match \$75,087

**MILL CREEK CROSS SECTION  
(looking downstream)**



**PROJECT BENEFITS**

- Improved water quality and reduced flooding
- Restored aquatic and terrestrial habitat; except geese!
- Enhanced site aesthetics and new recreational amenities
- Reduced nonpoint source pollution

**View of the Mill Creek**



View from the back deck of a restaurant: low-growing, flowering natives would not block the views of the stream, which would include constructed riffles and trees on the opposite bank

**Project Partners**



**Mill Creek Alliance**



**Project Funder**



**Maintenance Requirements**

**Year One**

Weed control during the first year of establishment is particularly important; selective spot spraying, wicking, or hand roughing of nuisance weeds, shrubs, and trees is recommended. Invasive species include:

- o Canada Thistle
- o Nodding Thistle
- o Johnson Grass
- o Honey Suckle

**After the First Year**

Some level of disturbance on approximately a three to seven-year cycle is recommended. Discing or controlled burns are popular maintenance strategies in more open settings; however, for ease of planning in the urban setting next to open water, weed whacking (or mowing on high) and raking out the thatch on an annual basis is recommended. Continue with weed control as prescribed above.